

# D.C. UNITED <sup>TM</sup> STADIUM



ZONING COMMISSION  
District of Columbia  
CASE NO. 18-03  
EXHIBIT NO. 23510

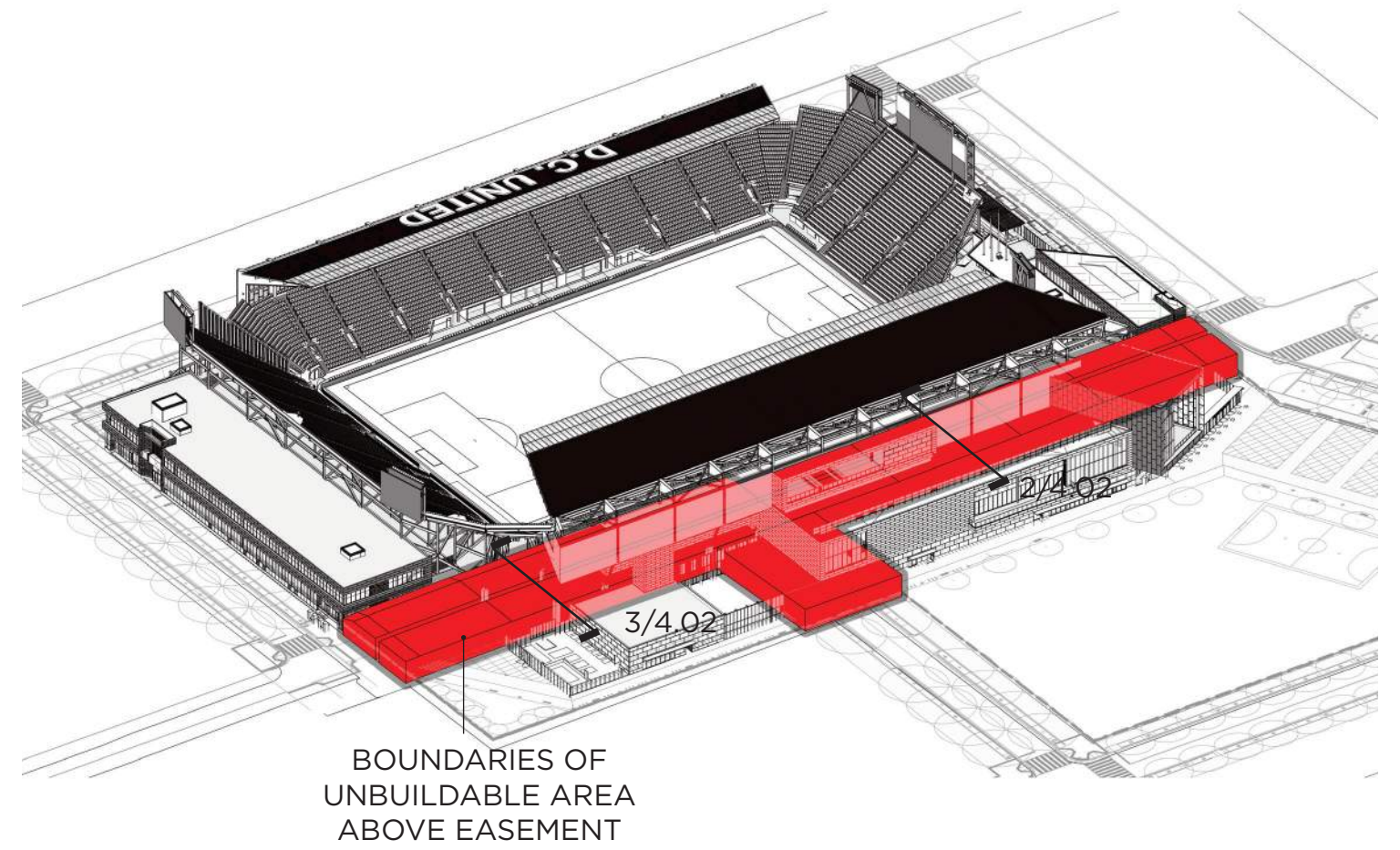
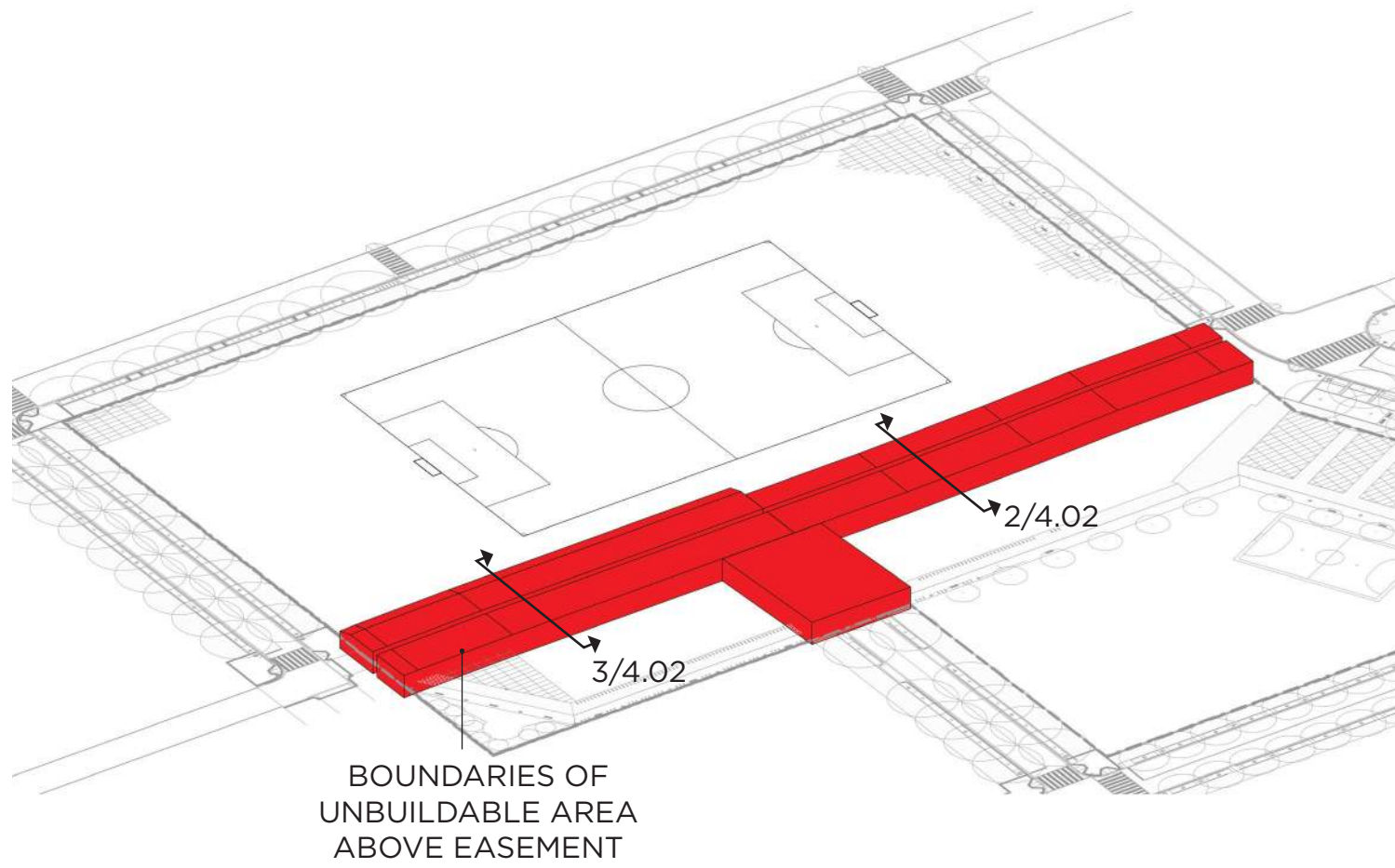
## SECTION

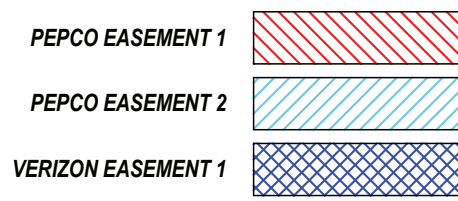
# 04

EASEMENT DIAGRAMS

STADIUM TECHNICAL  
DRAWINGS

- 4.01 EASEMENT DIAGRAMS
- 4.02 EASEMENT DIAGRAMS
  
- 4.03 LVL 00 - BASEMENT LEVEL PLAN
- 4.04 LVL 01 - FIELD LEVEL PLAN
- 4.05 LVL 02 - CLUB LEVEL PLAN
- 4.06 LVL 03 - SUITE LEVEL PLAN
- 4.07 LVL 04 - UPPER CONCOURSE PLAN
- 4.08 LVL 05 - ROOF PLAN
- 4.09 OVERALL BUILDING SECTIONS
- 4.10 ENLARGED BUILDING SECTIONS

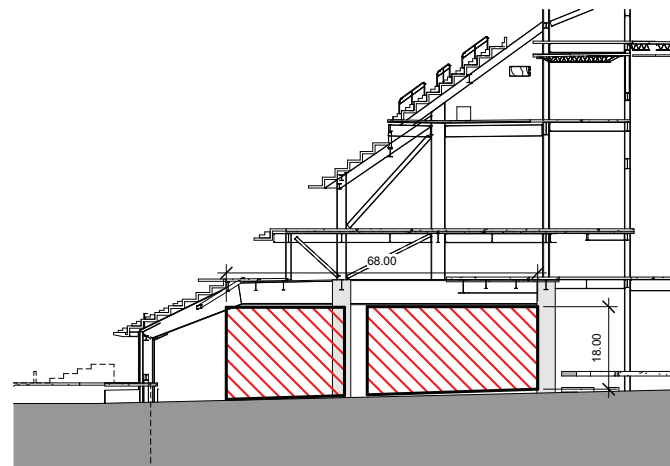




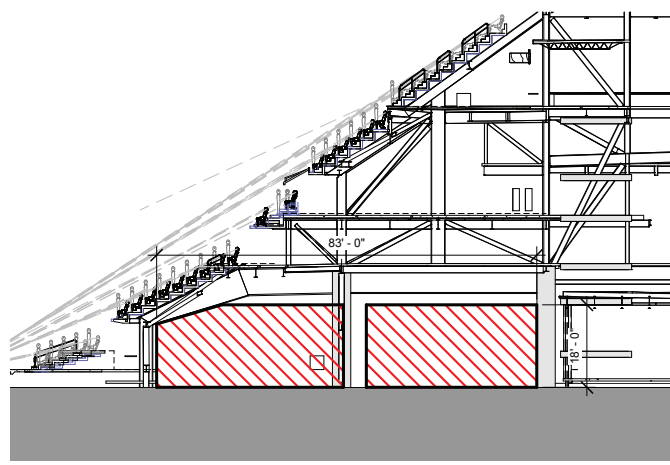
PART B - NOT PART OF STADIUM  
PUD SUBMISSION, DESIGN INTENT  
SHOWN FOR REFERENCE ONLY

PUBLIC REALM - NOT PART OF PUD  
SUBMISSION, DESIGN INTENT SHOWN  
FOR REFERENCE ONLY

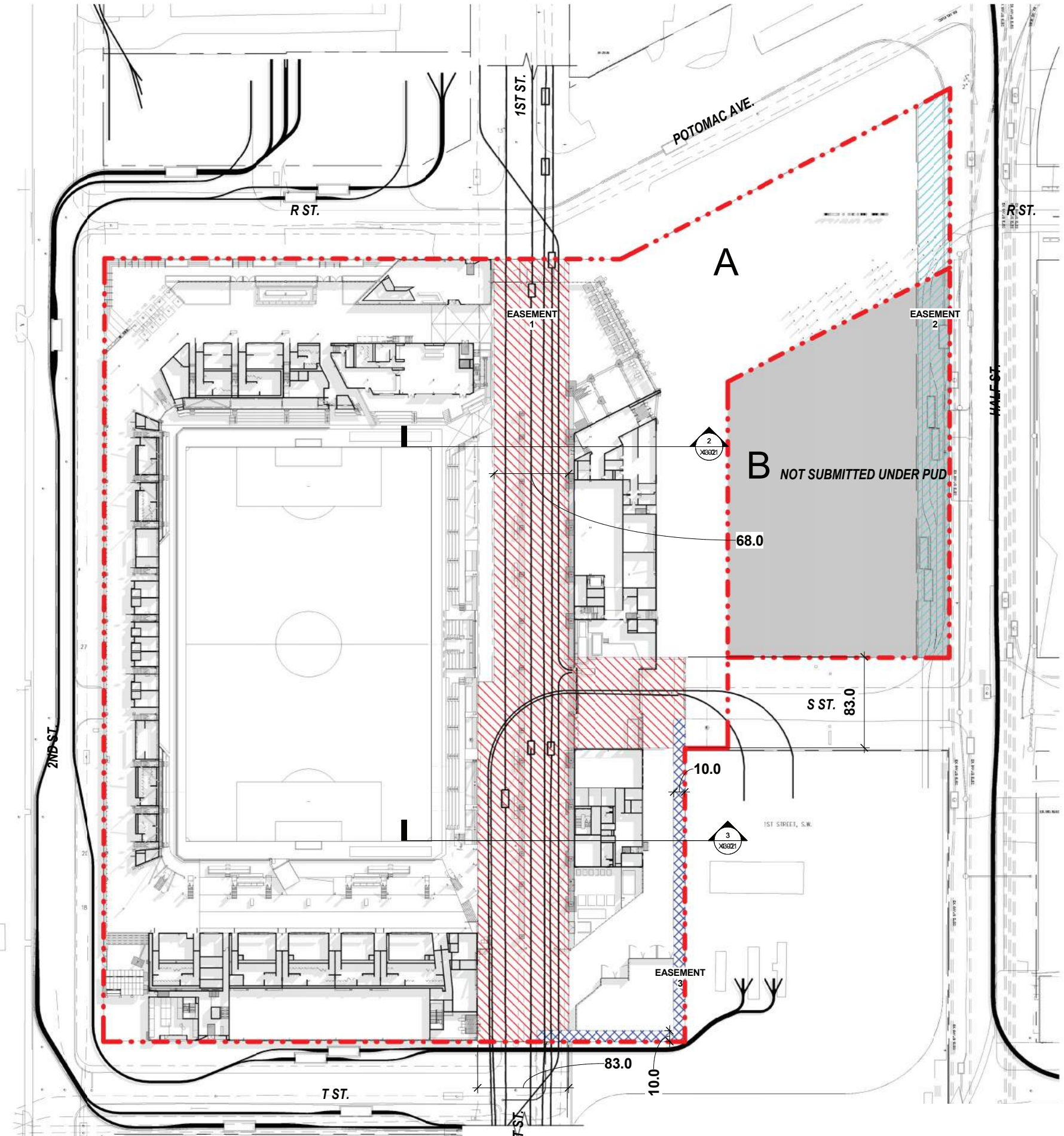
DISTRICT OF COLUMBIA RESPONSIBLE  
FOR DESIGN OF PUBLIC REALM



2 EASEMENT SECTION  
1" = 20'-0"



3 EASEMENT SECTION  
1" = 20'-0"



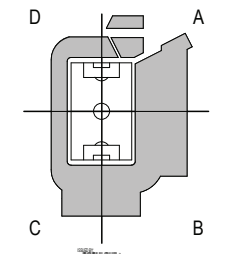
1 PEPCO EASEMENT PLAN  
1" = 50'-0"

**POPULOUS**  
Marshall Moya Design



DC UNITED SOCCER STADIUM  
100 Potomac Avenue, SW  
Washington, DC 20024

VERTICAL CIRCULATION  
PROCUREMENT SET



PROJECT NORTH

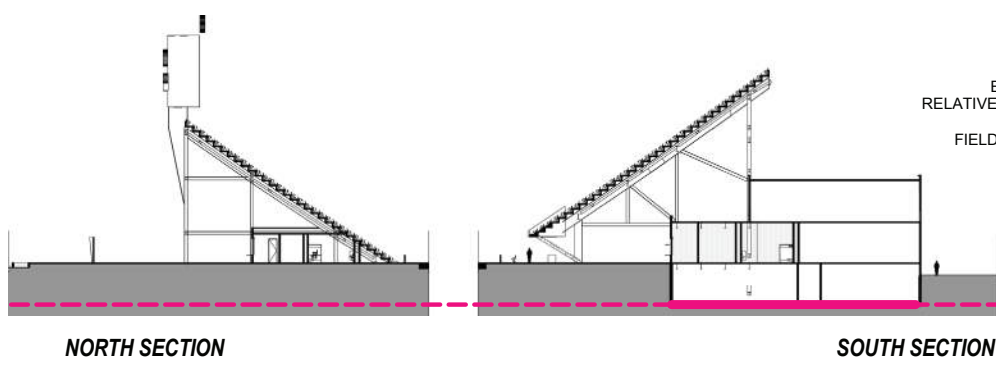
EASEMENT - NEW  
CONSTRUCTION

- 1 - SPECTATOR FACILITIES
- 1 - SPECTATOR FACILITIES - PREMIUM
- 1 - SPECTATOR FACILITIES - PREMIUM PATIO
- 2 - FOOD SERVICE & RETAIL
- 3 - TEAM FACILITIES
- 3 - TEAM FACILITIES HOME
- 4 - MEDIA FACILITIES
- 5 - ADMINISTRATION FACILITIES
- 6 - SERVICE & OPERATIONS
- 7 - CIRCULATION
- 7 - VERTICAL CIRCULATION
- 8 - BIKE VALET

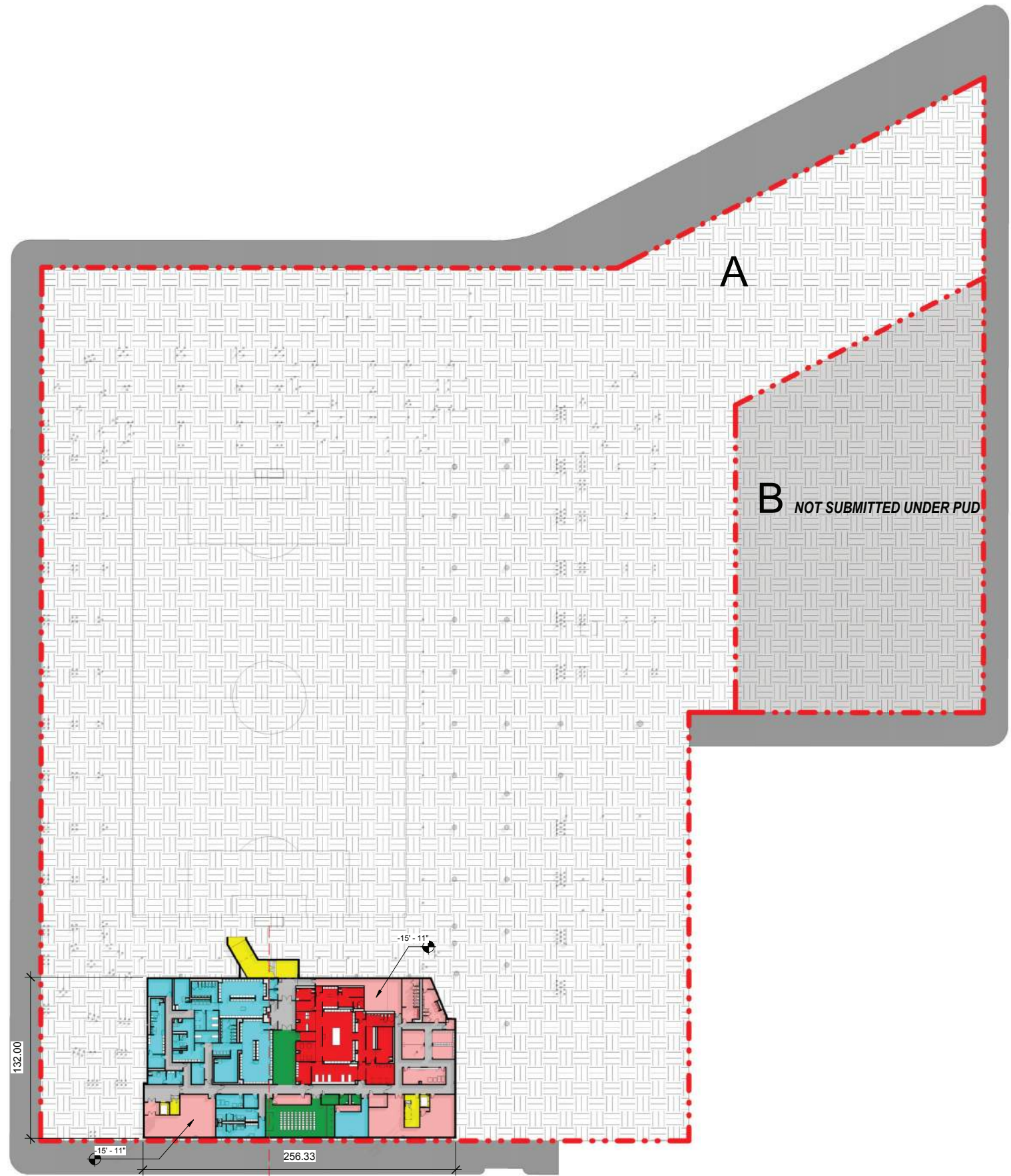
**PART B - NOT PART OF STADIUM  
PUD SUBMISSION, DESIGN INTENT  
SHOWN FOR REFERENCE ONLY**

**PUBLIC REALM - NOT PART OF PUD  
SUBMISSION, DESIGN INTENT SHOWN  
FOR REFERENCE ONLY**

**DISTRICT OF COLUMBIA RESPONSIBLE  
FOR DESIGN OF PUBLIC REALM**



ELEVATIONS ARE  
RELATIVE TO FIELD LEVEL  
FIELD LEVEL @ +22'-0"  
ABOVE SEA  
LEVEL



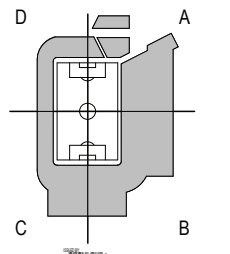
**B** NOT SUBMITTED UNDER PUD

**POPULOUS**  
Marshall | Moya Design

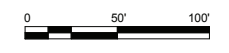


DC UNITED SOCCER STADIUM  
100 Potomac Avenue, SW  
Washington, DC 20024

VERTICAL CIRCULATION  
PROCUREMENT SET



REF PLAN - BASEMENT  
LEVEL PLAN

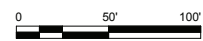
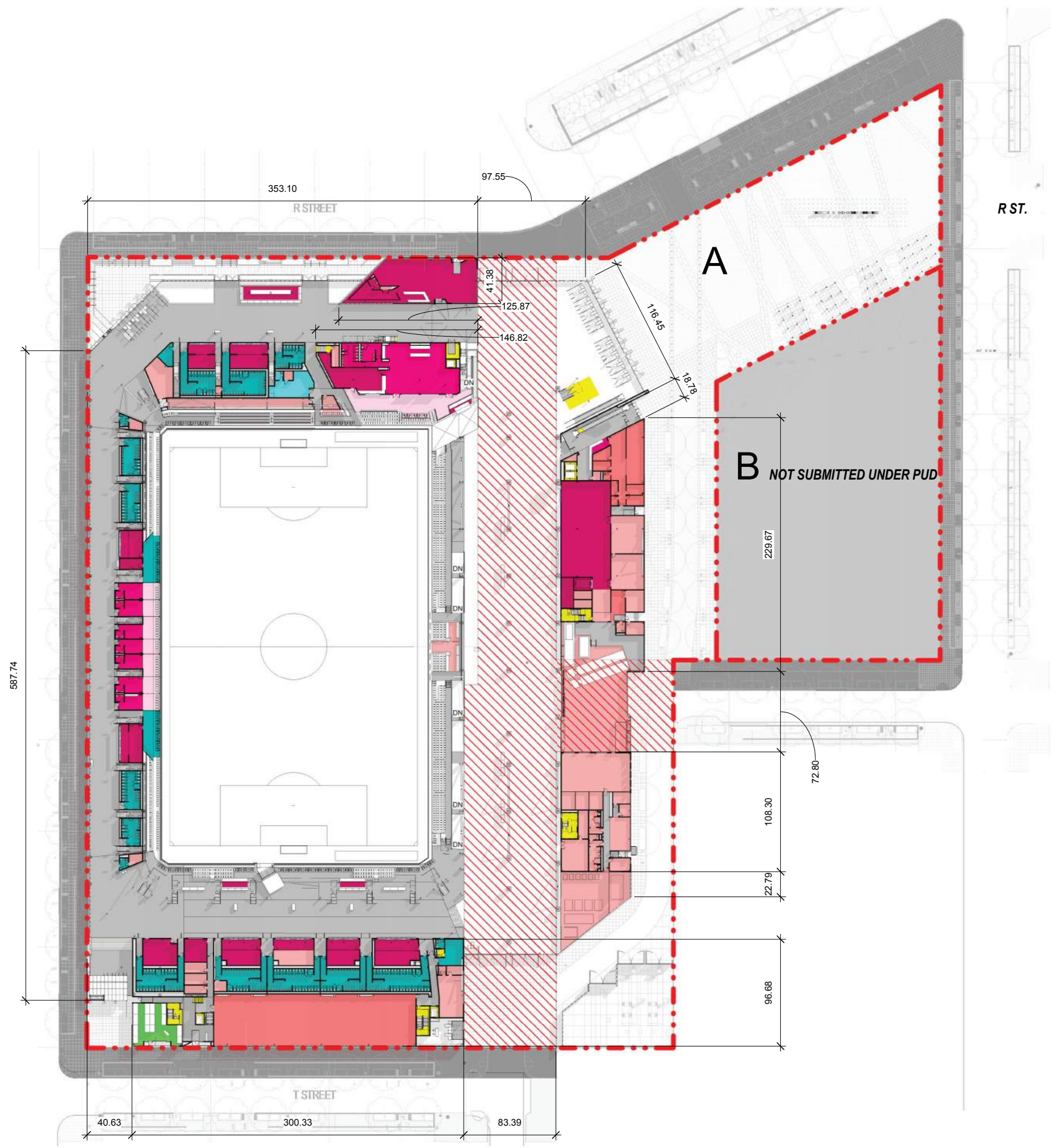
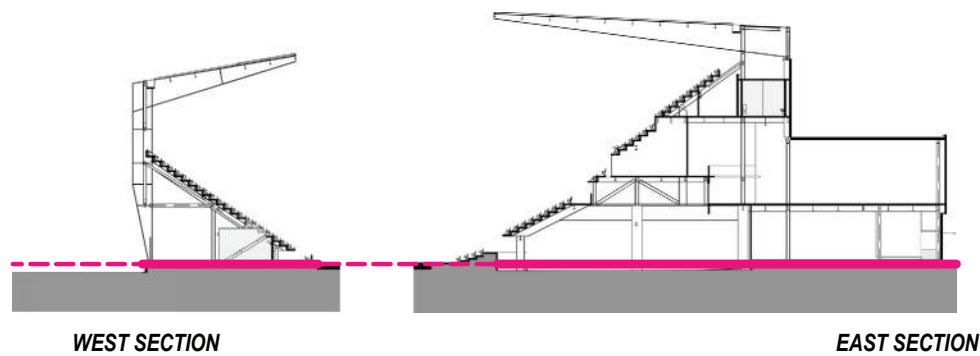


- 1 - SPECTATOR FACILITIES
- 1 - SPECTATOR FACILITIES - PREMIUM
- 1 - SPECTATOR FACILITIES - PREMIUM PATIO
- 2 - FOOD SERVICE & RETAIL
- 3 - TEAM FACILITIES
- 3 - TEAM FACILITIES HOME
- 4 - MEDIA FACILITIES
- 5 - ADMINISTRATION FACILITIES
- 6 - SERVICE & OPERATIONS
- 7 - CIRCULATION
- 7 - VERTICAL CIRCULATION
- 8 - BIKE VALET

**PART B - NOT PART OF STADIUM**  
**PUD SUBMISSION, DESIGN INTENT**  
**SHOWN FOR REFERENCE ONLY**

**PUBLIC REALM - NOT PART OF PUD**  
**SUBMISSION, DESIGN INTENT SHOWN**  
**FOR REFERENCE ONLY**

**DISTRICT OF COLUMBIA RESPONSIBLE**  
**FOR DESIGN OF PUBLIC REALM**



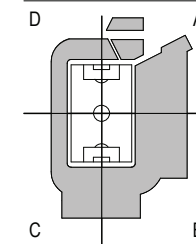
**1 FIELD LEVEL PLAN**  
 1" = 50'-0"

**POPULOUS**  
 Marshall | Moya Design



DC UNITED SOCCER STADIUM  
 100 Potomac Avenue, SW  
 Washington, DC 20024

VERTICAL CIRCULATION  
 PROCUREMENT SET



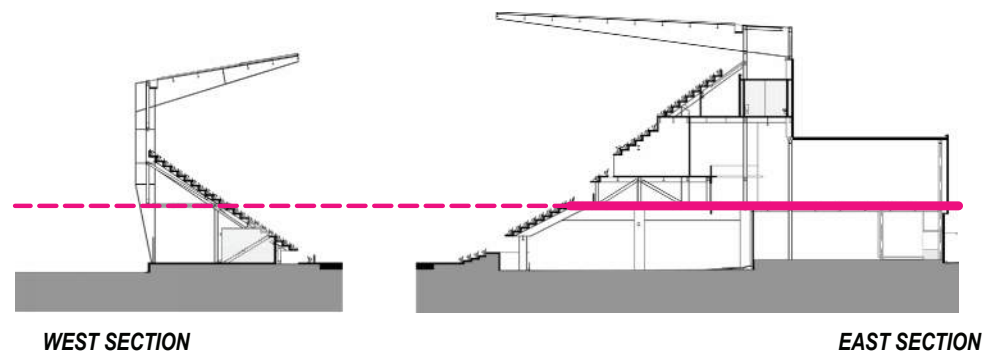
REF PLAN - FIELD LEVEL  
 PLAN

- 1 - SPECTATOR FACILITIES
- 1 - SPECTATOR FACILITIES - PREMIUM
- 1 - SPECTATOR FACILITIES - PREMIUM PATIO
- 2 - FOOD SERVICE & RETAIL
- 3 - TEAM FACILITIES
- 3 - TEAM FACILITIES HOME
- 4 - MEDIA FACILITIES
- 5 - ADMINISTRATION FACILITIES
- 6 - SERVICE & OPERATIONS
- 7 - CIRCULATION
- 7 - VERTICAL CIRCULATION
- 8 - BIKE VALET

**PART B - NOT PART OF STADIUM  
PUD SUBMISSION, DESIGN INTENT  
SHOWN FOR REFERENCE ONLY**

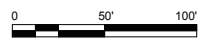
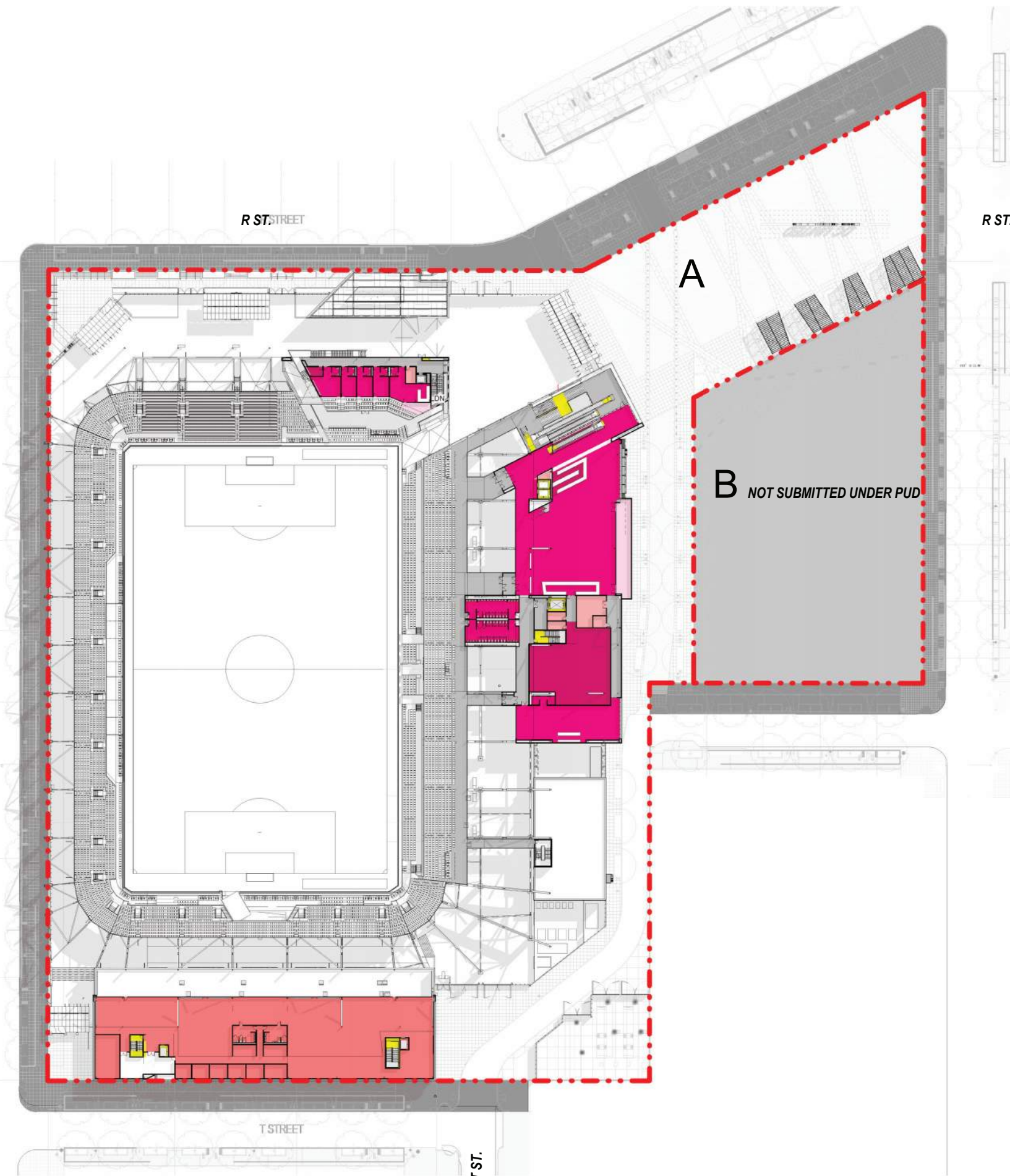
**PUBLIC REALM - NOT PART OF PUD  
SUBMISSION, DESIGN INTENT SHOWN  
FOR REFERENCE ONLY**

**DISTRICT OF COLUMBIA RESPONSIBLE  
FOR DESIGN OF PUBLIC REALM**



WEST SECTION

EAST SECTION



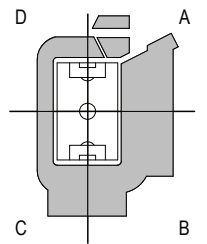
**1 CLUB LEVEL PLAN**  
1" = 50'-0"

**POPULOUS**  
Marshall Moya Design



DC UNITED SOCCER STADIUM  
100 Potomac Avenue, SW  
Washington, DC 20024

VERTICAL CIRCULATION  
PROCUREMENT SET



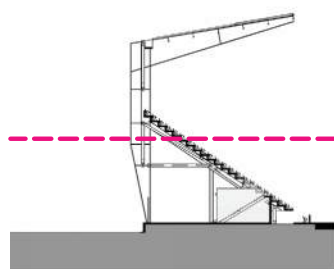
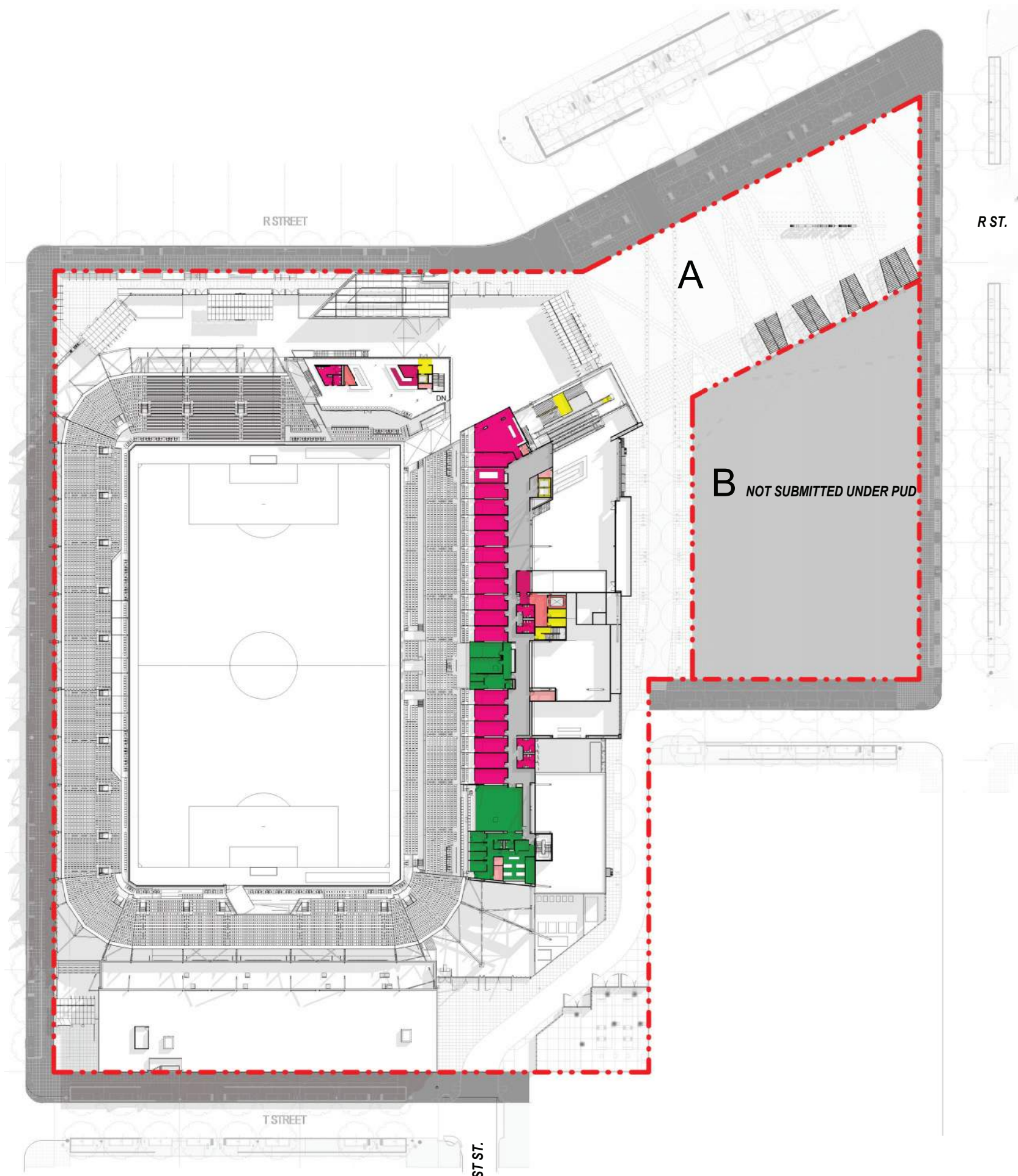
PROJECT NORTH  
REF PLAN - CLUB LEVEL  
PLAN

- 1 - SPECTATOR FACILITIES
- 1 - SPECTATOR FACILITIES - PREMIUM
- 1 - SPECTATOR FACILITIES - PREMIUM PATIO
- 2 - FOOD SERVICE & RETAIL
- 3 - TEAM FACILITIES
- 3 - TEAM FACILITIES HOME
- 4 - MEDIA FACILITIES
- 5 - ADMINISTRATION FACILITIES
- 6 - SERVICE & OPERATIONS
- 7 - CIRCULATION
- 7 - VERTICAL CIRCULATION
- 8 - BIKE VALET

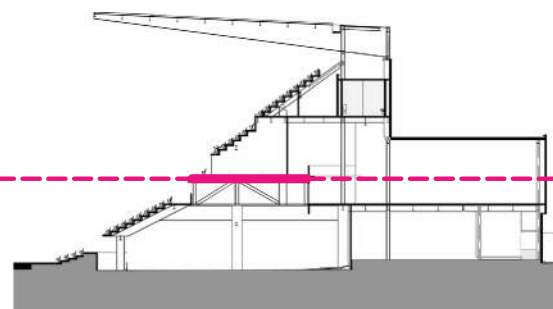
**PART B - NOT PART OF STADIUM  
PUD SUBMISSION, DESIGN INTENT  
SHOWN FOR REFERENCE ONLY**

**PUBLIC REALM - NOT PART OF PUD  
SUBMISSION, DESIGN INTENT SHOWN  
FOR REFERENCE ONLY**

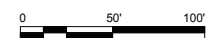
**DISTRICT OF COLUMBIA RESPONSIBLE  
FOR DESIGN OF PUBLIC REALM**



WEST SECTION



EAST SECTION



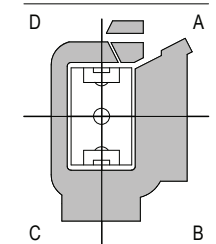
1 SUITE LEVEL PLAN  
1" = 50'-0"

**POPULOUS**  
Marshall | Moya Design



DC UNITED SOCCER STADIUM  
100 Potomac Avenue, SW  
Washington, DC 20024

VERTICAL CIRCULATION  
PROCUREMENT SET



REF PLAN - SUITE LEVEL  
PLAN

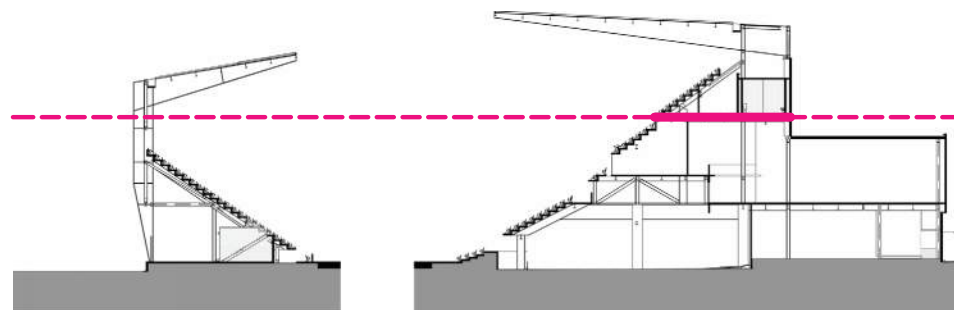


- 1 - SPECTATOR FACILITIES
- 1 - SPECTATOR FACILITIES - PREMIUM
- 1 - SPECTATOR FACILITIES - PREMIUM PATIO
- 2 - FOOD SERVICE & RETAIL
- 3 - TEAM FACILITIES
- 3 - TEAM FACILITIES HOME
- 4 - MEDIA FACILITIES
- 5 - ADMINISTRATION FACILITIES
- 6 - SERVICE & OPERATIONS
- 7 - CIRCULATION
- 7 - VERTICAL CIRCULATION
- 8 - BIKE VALET

**PART B - NOT PART OF STADIUM  
PUD SUBMISSION, DESIGN INTENT  
SHOWN FOR REFERENCE ONLY**

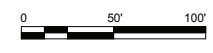
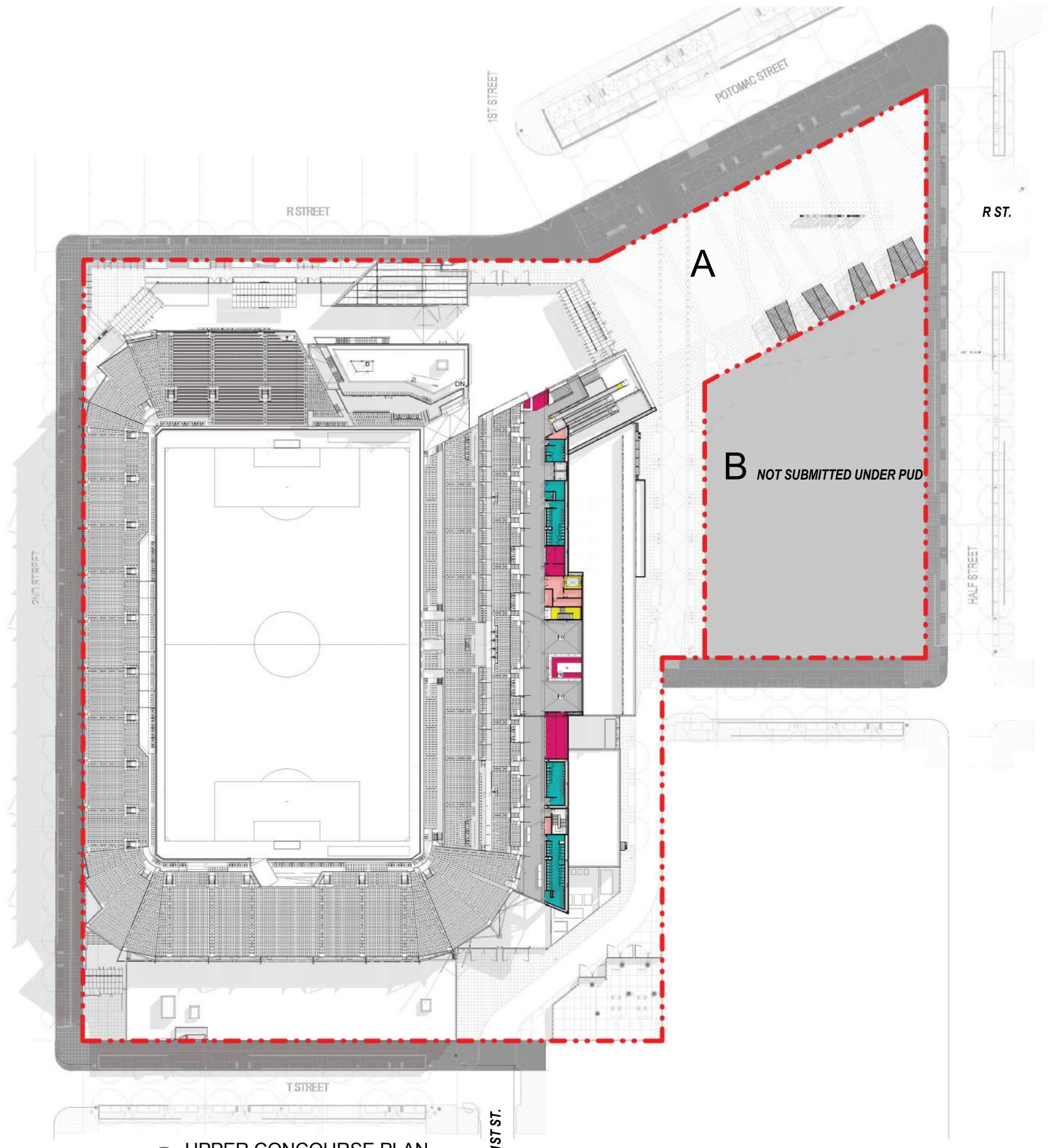
**PUBLIC REALM - NOT PART OF PUD  
SUBMISSION, DESIGN INTENT SHOWN  
FOR REFERENCE ONLY**

**DISTRICT OF COLUMBIA RESPONSIBLE  
FOR DESIGN OF PUBLIC REALM**



WEST SECTION

EAST SECTION



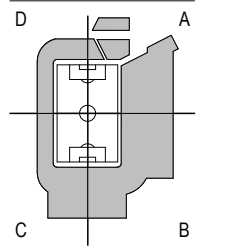
**1 UPPER CONCOURSE PLAN**  
1" = 50'-0"

**POPULOUS**  
Marshall Moya Design



DC UNITED SOCCER STADIUM  
100 Potomac Avenue, SW  
Washington, DC 20024

VERTICAL CIRCULATION  
PROCUREMENT SET



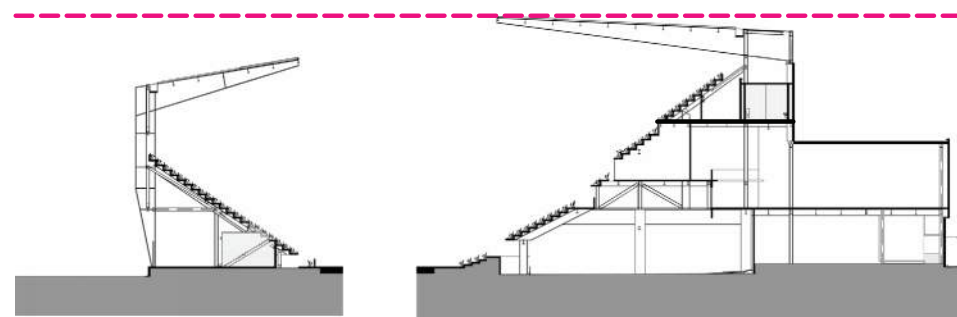
REF PLAN - UPPER  
CONCOURSE LEVEL PLAN

- 1 - SPECTATOR FACILITIES
- 1 - SPECTATOR FACILITIES - PREMIUM
- 1 - SPECTATOR FACILITIES - PREMIUM PATIO
- 2 - FOOD SERVICE & RETAIL
- 3 - TEAM FACILITIES
- 3 - TEAM FACILITIES HOME
- 4 - MEDIA FACILITIES
- 5 - ADMINISTRATION FACILITIES
- 6 - SERVICE & OPERATIONS
- 7 - CIRCULATION
- 7 - VERTICAL CIRCULATION
- 8 - BIKE VALET

**PART B - NOT PART OF STADIUM  
PUD SUBMISSION, DESIGN INTENT  
SHOWN FOR REFERENCE ONLY**

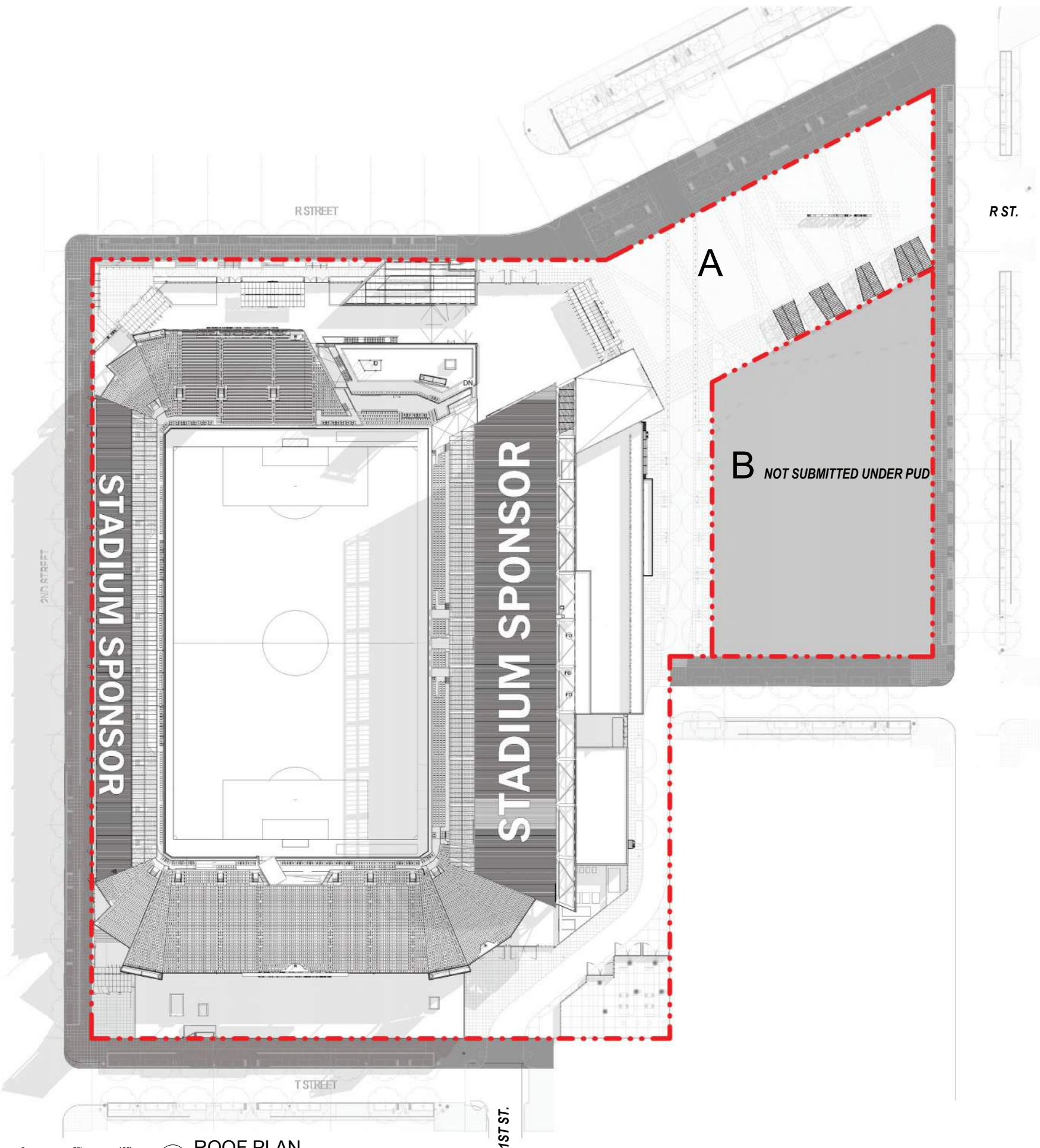
**PUBLIC REALM - NOT PART OF PUD  
SUBMISSION, DESIGN INTENT SHOWN  
FOR REFERENCE ONLY**

**DISTRICT OF COLUMBIA RESPONSIBLE  
FOR DESIGN OF PUBLIC REALM**



WEST SECTION

EAST SECTION



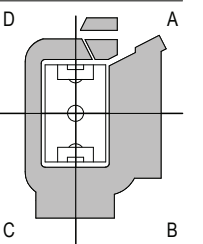
**1 ROOF PLAN**  
1" = 50'-0"

**POPULOUS**  
Marshall | Moya Design

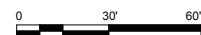
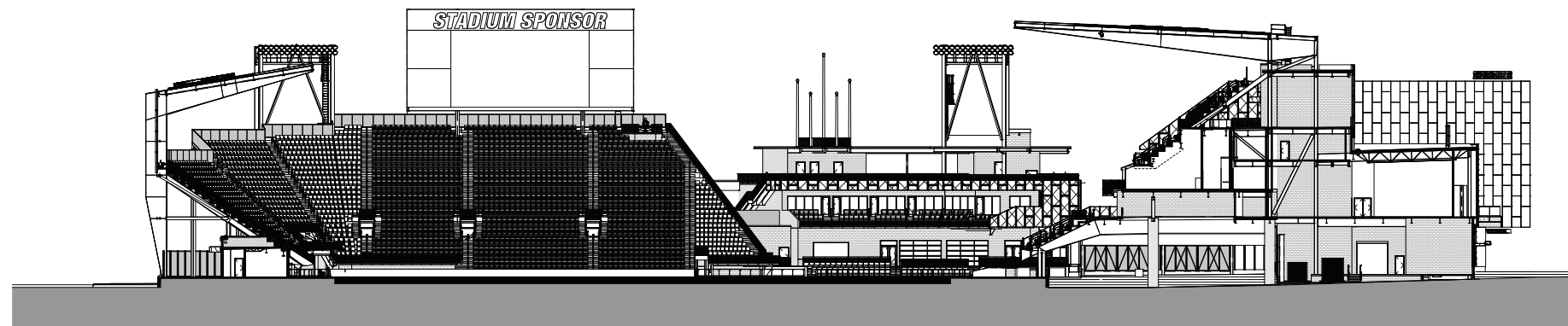


DC UNITED SOCCER STADIUM  
100 Potomac Avenue, SW  
Washington, DC 20024

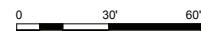
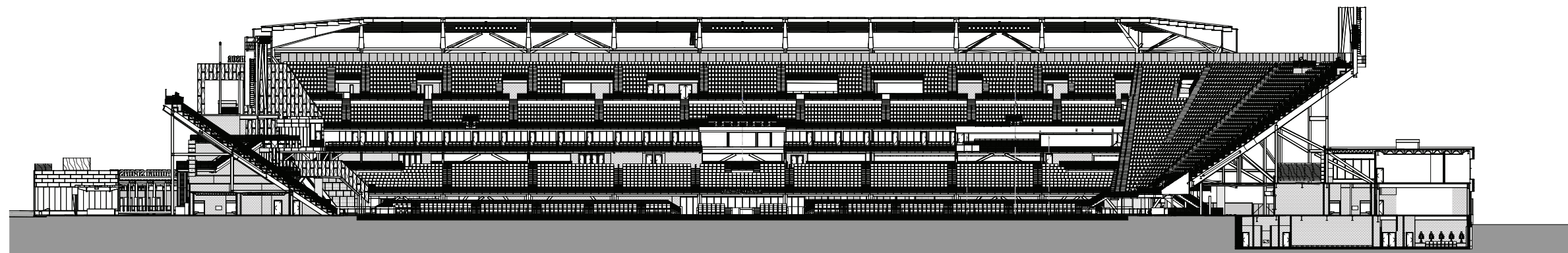
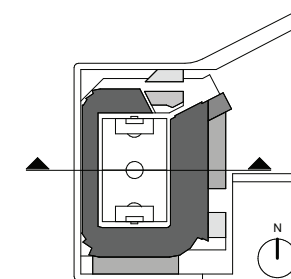
VERTICAL CIRCULATION  
PROCUREMENT SET



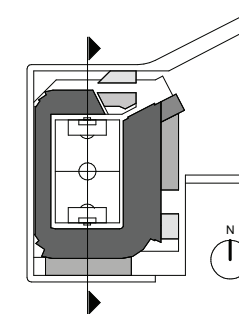
REF PLAN - ROOF PLAN



1 E - W SECTION LOOKING NORTH  
1" = 30'-0"



2 N - S SECTION LOOKING EAST  
1" = 30'-0"

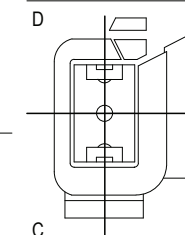


**POPULOUS**  
Marshall Moya Design



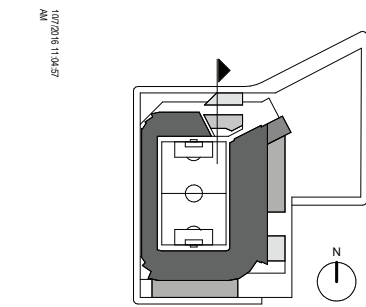
DC UNITED SOCCER STADIUM  
100 Potomac Avenue, SW  
Washington, DC 20024

VERTICAL CIRCULATION  
PROCUREMENT SET

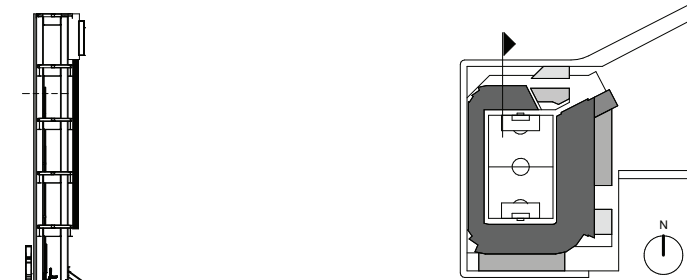


POPULOUS  
ARCHITECTS

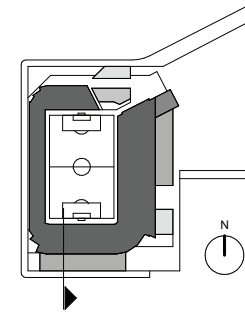
OVERALL BUILDING  
SECTIONS



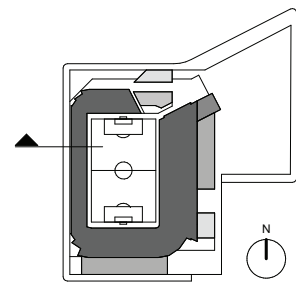
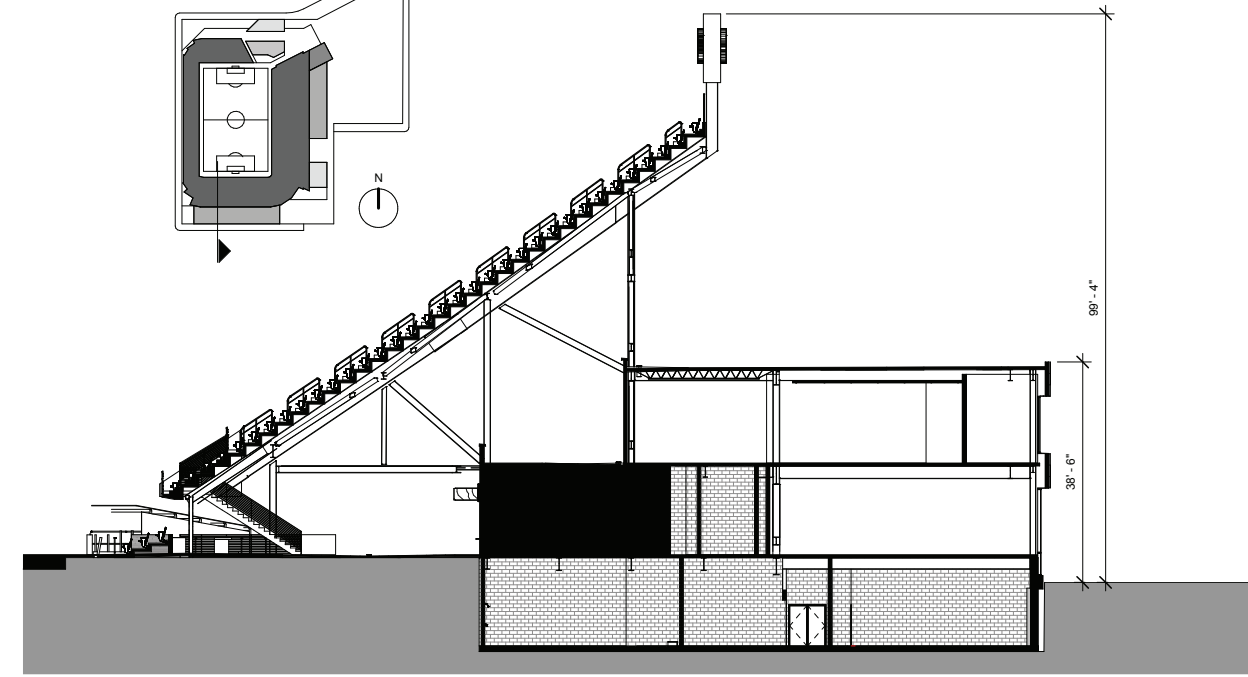
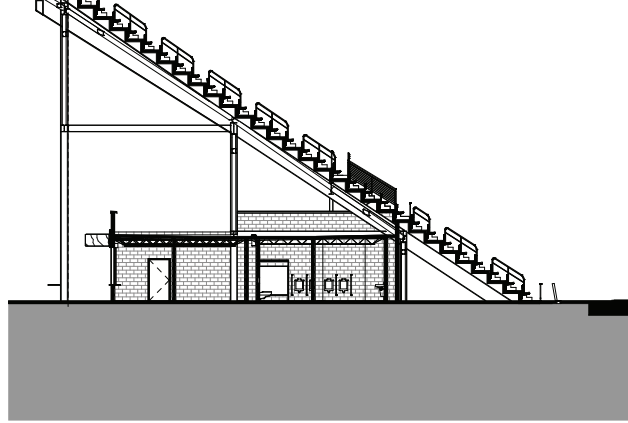
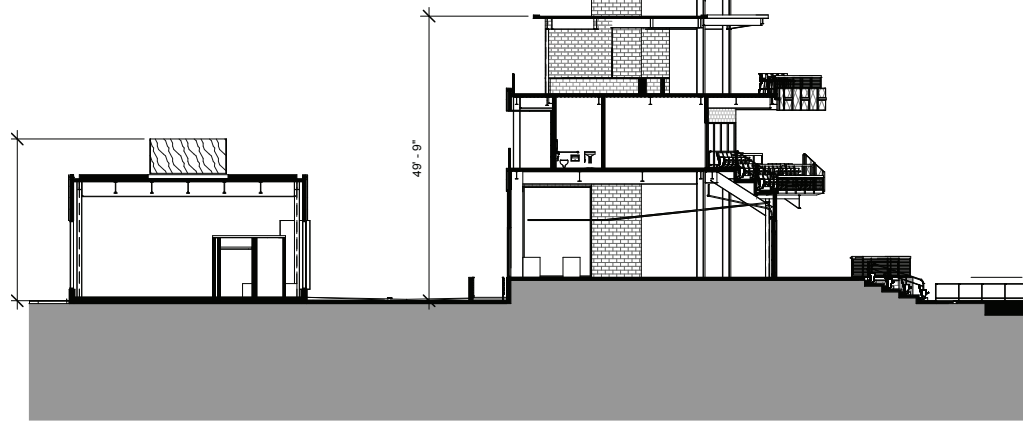
5 NORTH ENLARGED SECTION @ CLUB  
1/16" = 1'-0"



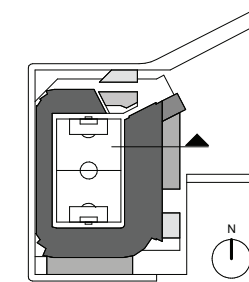
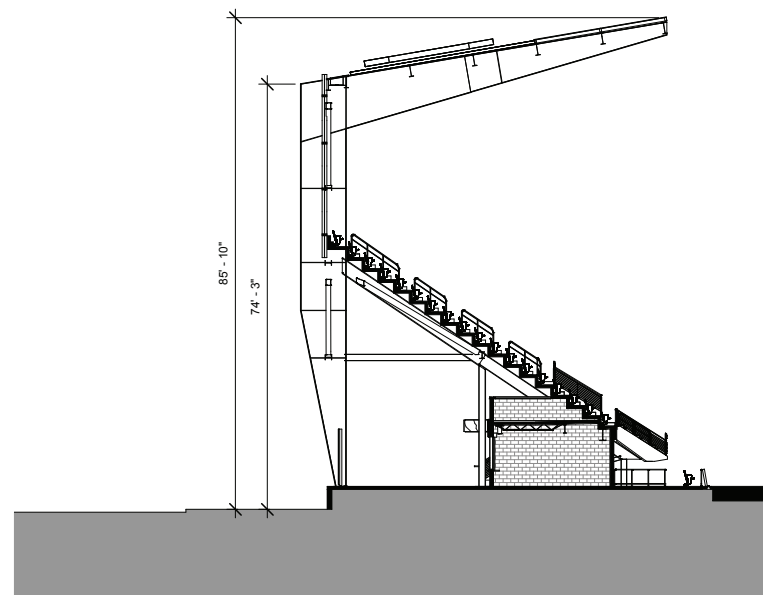
4 NORTH ENLARGED SECTION  
1/16" = 1'-0"



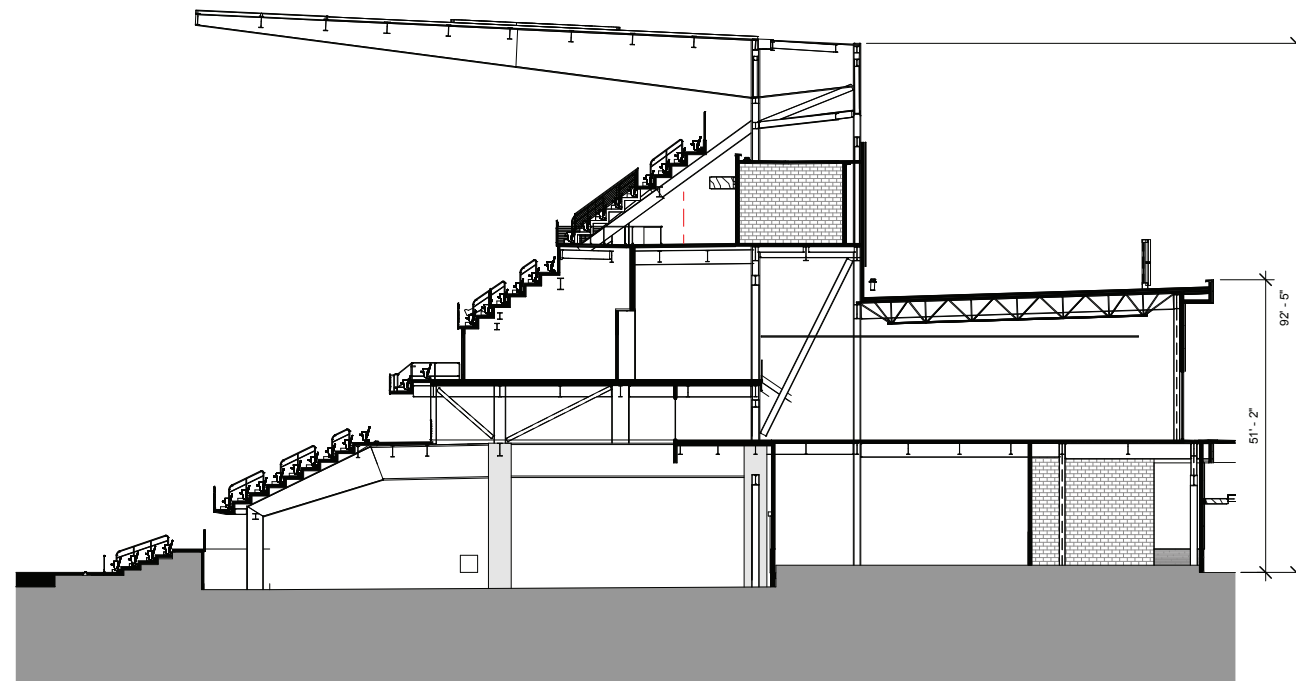
3 SOUTH ENLARGED SECTION  
1/16" = 1'-0"



2 EAST ENLARGED SECTION  
1/16" = 1'-0"



1  
E  
1

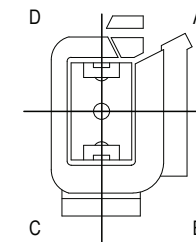


**POPULOUS**  
Marshall | Moya Design



DC UNITED SOCCER STADIUM  
100 Potomac Avenue, SW  
Washington, DC 20024

VERTICAL CIRCULATION  
PROCUREMENT SET



ENLARGED BUILDING  
SECTIONS